



RWANDA

General Information

Population (million), 2004:	8.9
Urban population (%), 2004:	20.0
Surface area ('000 km ²):	26
Population density (persons per km ²):	337

Economic & Social Development

GDP (million US dollars), 2004:	1,823
GDP per capita (US dollars), 2004:	205
GDP growth rate (annual %), 1995-2004:	7.6
Structure of GDP (%), 2003:	
Agriculture, forestry & fishing	41.3
Industry	21.3
Services	37.4
UNDP HDI rank, 2005	159
Life expectancy at birth (years), 2004:	44
Infant mortality rate (per 1,000 live births), 2004:	115
Illiteracy rate, adult (%), 2003:	36.0
Unemployment rate (%), 2003:	0.6
National poverty rate (% of population), 2004:	60.3

External Trade

Total merchandise exports (million US dollars), 2004:	98
Merchandise exports (% of GDP), 2004:	5.4
Total merchandise imports (million US dollars), 2004:	284
Merchandise imports (% of GDP), 2004:	15.6

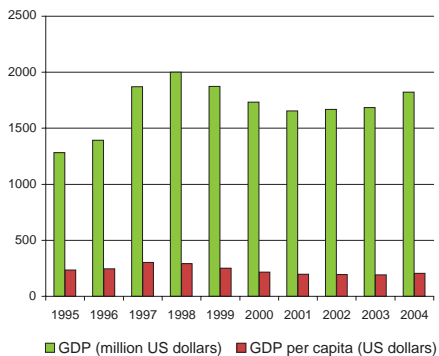
Investments, External Debt & Aid

FDI net inflows (million US dollars), 2004:	11
FDI net inflows (% of GDP), 2004:	0.6
External debt (million US dollars), 2003:	1,540
Debt per capita (US dollars), 2003:	184
External reserves (million US dollars), 2003:	215
Reserves per capita (US dollars), 2003:	26
Aid per capita (US dollars):	39

Infrastructure

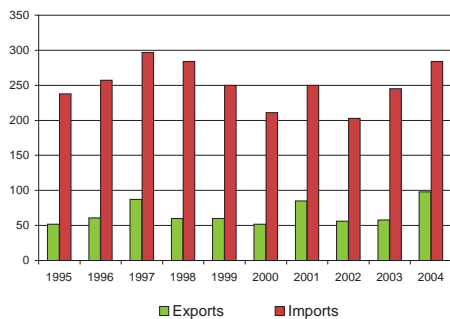
Closest distance from sea (km):	1,867
Total road network (km):	12,000
Road density (km per 1,000 km ²):	462
Paved roads (% of total):	8.3
Railway lines, total route (km):	None
Railway density (km per 1,000 km ²):	..

GDP and GDP per capita, 1995 - 2004

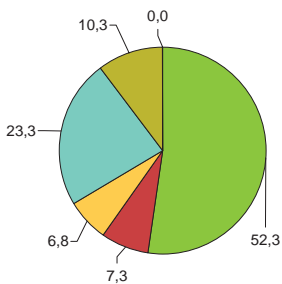


Merchandise Trade, 1995 - 2004

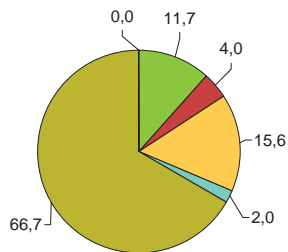
(million US dollars)



Main export products (%)

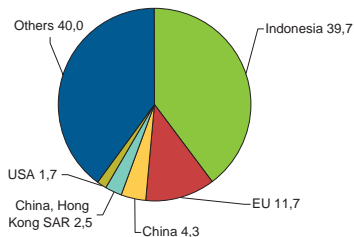


Main import products (%)



■ All food items
 ■ Agricultural raw materials
 ■ Energy & Fuels
 ■ Ores & metals
 ■ Manufactured goods
 ■ Unallocated

Main export partners (%)



Main import partners (%)

