



PARAGUAY

General Information

Population (million), 2004:	6.0
Urban population (%), 2004:	58.5
Surface area ('000 km ²):	407
Population density (persons per km ²):	15

Economic & Social Development

GDP (million US dollars), 2004:	7,029
GDP per capita (US dollars), 2004:	1,168
GDP growth rate (annual %), 1995-2004:	0.7
Structure of GDP (%), 2003:	
Agriculture, forestry & fishing	27.2
Industry	24.2
Services	48.5
UNDP HDI rank, 2005	88
Life expectancy at birth (years), 2004:	71
Infant mortality rate (per 1,000 live births), 2004:	36
Illiteracy rate, adult (%), 2003:	8.0
Unemployment rate (%), 2003:	6.8
National poverty rate (% of population), 2004:	21.8

External Trade

Total merchandise exports (million US dollars), 2004:	1,657
Merchandise exports (% of GDP), 2004:	23.6
Total merchandise imports (million US dollars), 2004:	2,600
Merchandise imports (% of GDP), 2004:	37.0

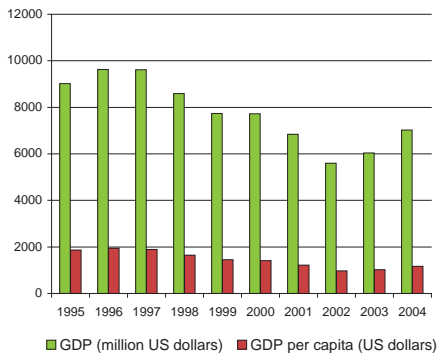
Investments, External Debt & Aid

FDI net inflows (million US dollars), 2004:	119
FDI net inflows (% of GDP), 2004:	1.7
External debt (million US dollars), 2003:	3,210
Debt per capita (US dollars), 2003:	546
External reserves (million US dollars), 2003:	983
Reserves per capita (US dollars), 2003:	167
Aid per capita (US dollars):	9

Infrastructure

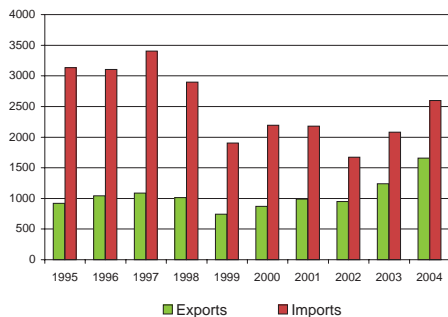
Closest distance from sea (km):	1,022
Total road network (km):	29,500
Road density (km per 1,000 km ²):	73
Paved roads (% of total):	50.8
Railway lines, total route (km):	441
Railway density (km per 1,000 km ²):	1

GDP and GDP per capita, 1995 - 2004

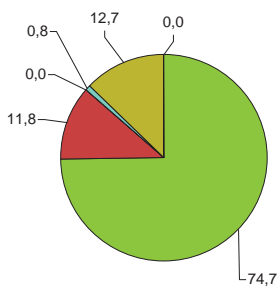


Merchandise Trade, 1995 - 2004

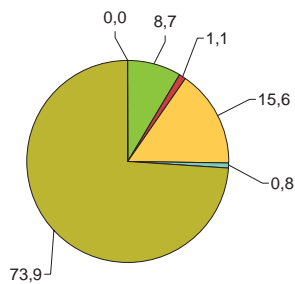
(million US dollars)



Main export products (%)

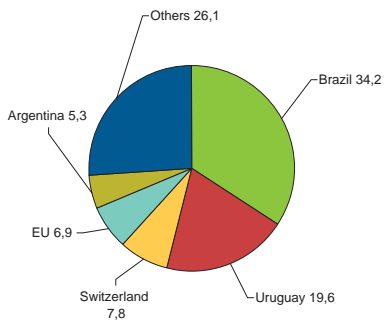


Main import products (%)



■ All food items
 ■ Agricultural raw materials
 ■ Energy & Fuels
 ■ Ores & metals
 ■ Manufactured goods
 ■ Unallocated

Main export partners (%)



Main import partners (%)

