



General Information

Population (million), 2004:	13.1
Urban population (%), 2004:	33.0
Surface area ('000 km ²):	1,240
Population density (persons per km ²):	11

Economic & Social Development

GDP (million US dollars), 2004:	4,945
GDP per capita (US dollars), 2004:	377
GDP growth rate (annual %), 1995-2004:	5.0
Structure of GDP (%), 2003:	
Agriculture, forestry & fishing	36.3
Industry	27.0
Services	36.7
UNDP HDI rank, 2005	174
Life expectancy at birth (years), 2004:	48
Infant mortality rate (per 1,000 live births), 2004:	131
Illiteracy rate, adult (%), 2003:	81.0
Unemployment rate (%), 2003:	..
National poverty rate (% of population), 2004:	63.8

External Trade

Total merchandise exports (million US dollars), 2004:	1,123
Merchandise exports (% of GDP), 2004:	22.7
Total merchandise imports (million US dollars), 2004:	1,300
Merchandise imports (% of GDP), 2004:	26.3

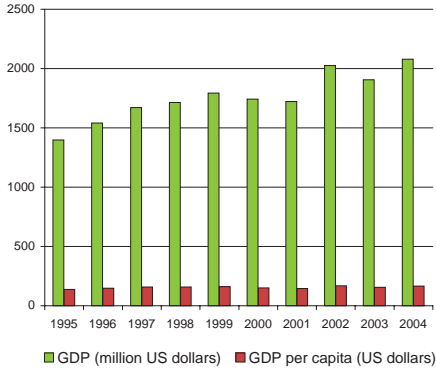
Investments, External Debt & Aid

FDI net inflows (million US dollars), 2004:	180
FDI net inflows (% of GDP), 2004:	3.6
External debt (million US dollars), 2003:	3,129
Debt per capita (US dollars), 2003:	241
External reserves (million US dollars), 2003:	909
Reserves per capita (US dollars), 2003:	70
Aid per capita (US dollars):	45

Infrastructure

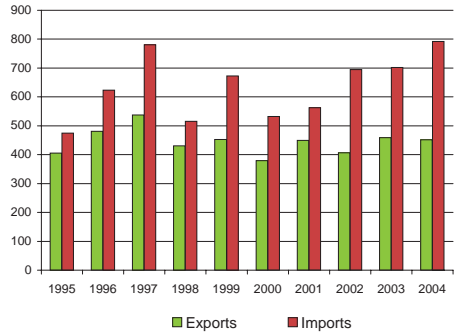
Closest distance from sea (km):	1,225
Total road network (km):	15,100
Road density (km per 1,000 km ²):	12
Paved roads (% of total):	12.1
Railway lines, total route (km):	733
Railway density (km per 1,000 km ²):	1

GDP and GDP per capita, 1995 - 2004

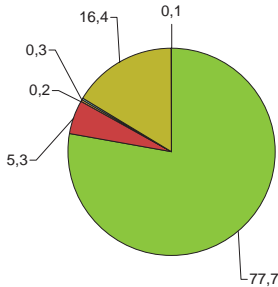


Merchandise Trade, 1995 - 2004

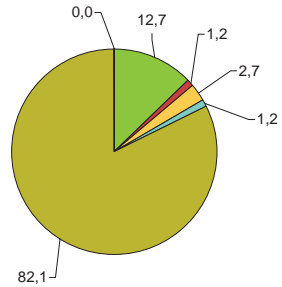
(million US dollars)



Main export products (%)

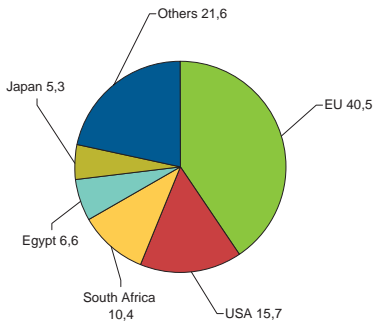


Main import products (%)



■ All food items
 ■ Agricultural raw materials
 ■ Energy & Fuels
 ■ Ores & metals
 ■ Manufactured goods
 ■ Unallocated

Main export partners (%)



Main import partners (%)

