



MALAWI

General Information

Population (million), 2004:	12.6
Urban population (%), 2004:	17.2
Surface area ('000 km ²):	118
Population density (persons per km ²):	106

Economic & Social Development

GDP (million US dollars), 2004:	2,078
GDP per capita (US dollars), 2004:	165
GDP growth rate (annual %), 1995-2004:	2.6
Structure of GDP (%), 2003:	
Agriculture, forestry & fishing	33.0
Industry	19.8
Services	46.6
UNDP HDI rank, 2005	165
Life expectancy at birth (years), 2004:	40
Infant mortality rate (per 1,000 live births), 2004:	108
Illiteracy rate, adult (%), 2003:	36.0
Unemployment rate (%), 2003:	..
National poverty rate (% of population), 2004:	65.3

External Trade

Total merchandise exports (million US dollars), 2004:	452
Merchandise exports (% of GDP), 2004:	21.8
Total merchandise imports (million US dollars), 2004:	792
Merchandise imports (% of GDP), 2004:	38.1

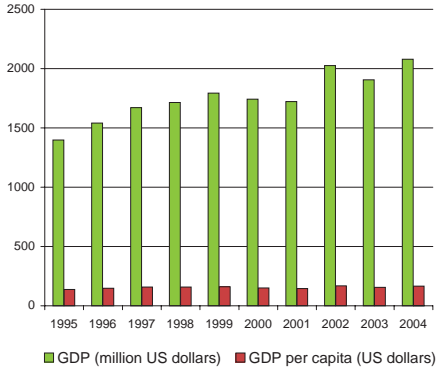
Investments, External Debt & Aid

FDI net inflows (million US dollars), 2004:	16
FDI net inflows (% of GDP), 2004:	0.8
External debt (million US dollars), 2003:	3,134
Debt per capita (US dollars), 2003:	259
External reserves (million US dollars), 2003:	132
Reserves per capita (US dollars), 2003:	11
Aid per capita (US dollars):	45

Infrastructure

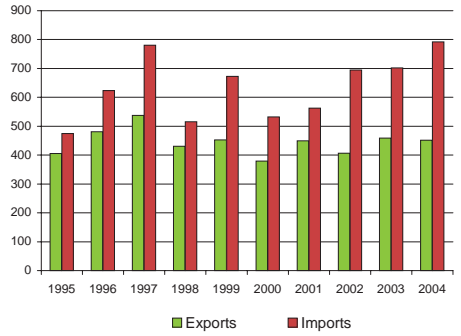
Closest distance from sea (km):	803
Total road network (km):	28,400
Road density (km per 1,000 km ²):	241
Paved roads (% of total):	18.5
Railway lines, total route (km):	797
Railway density (km per 1,000 km ²):	7

GDP and GDP per capita, 1995 - 2004

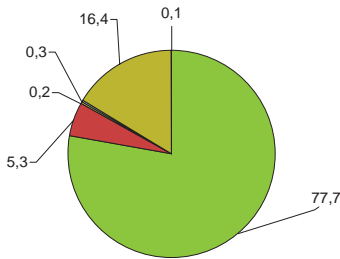


Merchandise Trade, 1995 - 2004

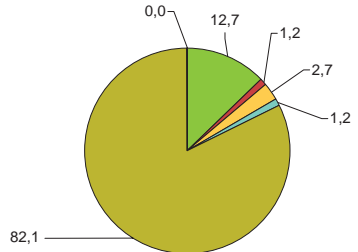
(million US dollars)



Main export products (%)

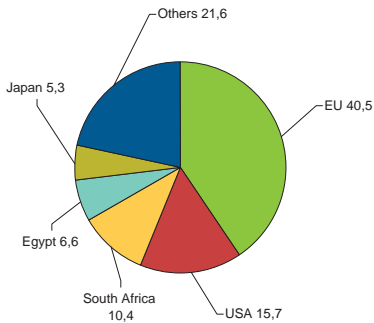


Main import products (%)



■ All food items
 ■ Agricultural raw materials
 ■ Energy & Fuels
 ■ Ores & metals
 ■ Manufactured goods
 ■ Unallocated

Main export partners (%)



Main import partners (%)

