



ETHIOPIA

General Information

Population (million), 2004:	75.6
Urban population (%), 2004:	16.2
Surface area ('000 km ²):	1,104
Population density (persons per km ²):	68

Economic & Social Development

GDP (million US dollars), 2004:	8,038
GDP per capita (US dollars), 2004:	106
GDP growth rate (annual %), 1995-2004:	4.2
Structure of GDP (%), 2003:	
Agriculture, forestry & fishing	43.0
Industry	11.0
Services	45.7
UNDP HDI rank, 2005	170
Life expectancy at birth (years), 2004:	48
Infant mortality rate (per 1,000 live births), 2004:	97
Illiteracy rate, adult (%), 2003:	..
Unemployment rate (%), 2003:	..
National poverty rate (% of population), 2004:	44.2

External Trade

Total merchandise exports (million US dollars), 2004:	593
Merchandise exports (% of GDP), 2004:	7.4
Total merchandise imports (million US dollars), 2004:	3,750
Merchandise imports (% of GDP), 2004:	46.7

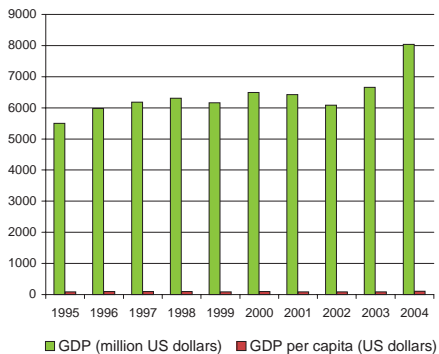
Investments, External Debt & Aid

FDI net inflows (million US dollars), 2004:	545
FDI net inflows (% of GDP), 2004:	6.8
External debt (million US dollars), 2003:	7,151
Debt per capita (US dollars), 2003:	101
External reserves (million US dollars), 2003:	956
Reserves per capita (US dollars), 2003:	14
Aid per capita (US dollars):	22

Infrastructure

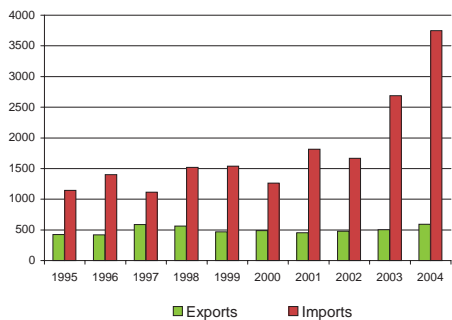
Closest distance from sea (km):	781
Total road network (km):	33,297
Road density (km per 1,000 km ²):	30
Paved roads (% of total):	12
Railway lines, total route (km):	681
Railway density (km per 1,000 km ²):	1

GDP and GDP per capita, 1995 - 2004

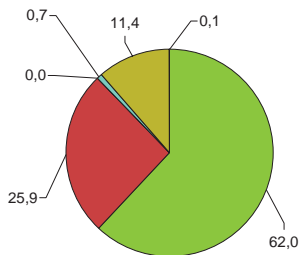


Merchandise Trade, 1995 - 2004

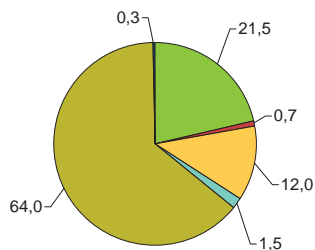
(million US dollars)



Main export products (%)

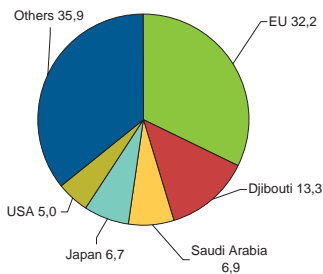


Main import products (%)



■ All food items
 ■ Agricultural raw materials
 ■ Energy & Fuels
 ■ Ores & metals
 ■ Manufactured goods
 ■ Unallocated

Main export partners (%)



Main import partners (%)

