



CENTRAL AFRICAN REPUBLIC

General Information

Population (million), 2004:	4.0
Urban population (%), 2004:	43.0
Surface area ('000 km ²):	623
Population density (persons per km ²):	6

Economic & Social Development

GDP (million US dollars), 2004:	1,313
GDP per capita (US dollars), 2004:	330
GDP growth rate (annual %), 1995-2004:	1.1
Structure of GDP (%), 2003:	
Agriculture, forestry & fishing	59.3
Industry	16.6
Services	24.6
UNDP HDI rank, 2005	171
Life expectancy at birth (years), 2004:	39
Infant mortality rate (per 1,000 live births), 2004:	97
Illiteracy rate, adult (%), 2003:	51.0
Unemployment rate (%), 2003:	..
National poverty rate (% of population), 2004:	..

External Trade

Total merchandise exports (million US dollars), 2004:	151
Merchandise exports (% of GDP), 2004:	11.5
Total merchandise imports (million US dollars), 2004:	120
Merchandise imports (% of GDP), 2004:	9.1

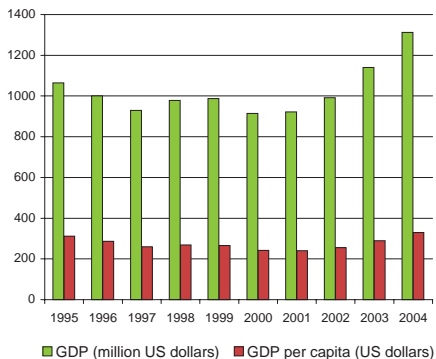
Investments, External Debt & Aid

FDI net inflows (million US dollars), 2004:	-13
FDI net inflows (% of GDP), 2004:	-1.0
External debt (million US dollars), 2003:	1,328
Debt per capita (US dollars), 2003:	344
External reserves (million US dollars), 2003:	137
Reserves per capita (US dollars), 2003:	35
Aid per capita (US dollars):	13

Infrastructure

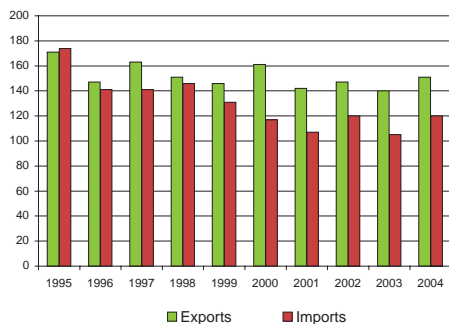
Closest distance from sea (km):	1,518
Total road network (km):	23,810
Road density (km per 1,000 km ²):	38
Paved roads (% of total):	2.7
Railway lines, total route (km):	None
Railway density (km per 1,000 km ²):	..

GDP and GDP per capita, 1995 - 2004

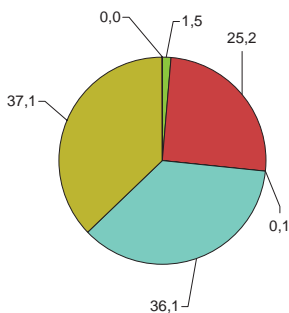


Merchandise Trade, 1995 - 2004

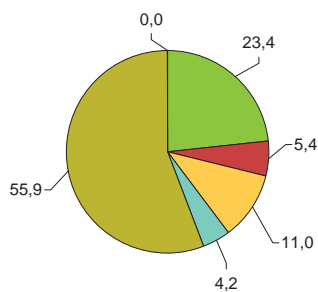
(million US dollars)



Main export products (%)

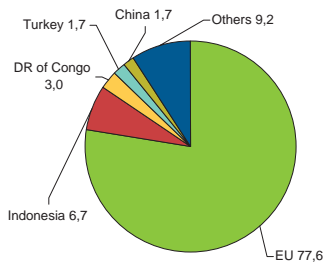


Main import products (%)



■ All food items
 ■ Agricultural raw materials
 ■ Energy & Fuels
 ■ Ores & metals
 ■ Manufactured goods
 ■ Unallocated

Main export partners (%)



Main import partners (%)

